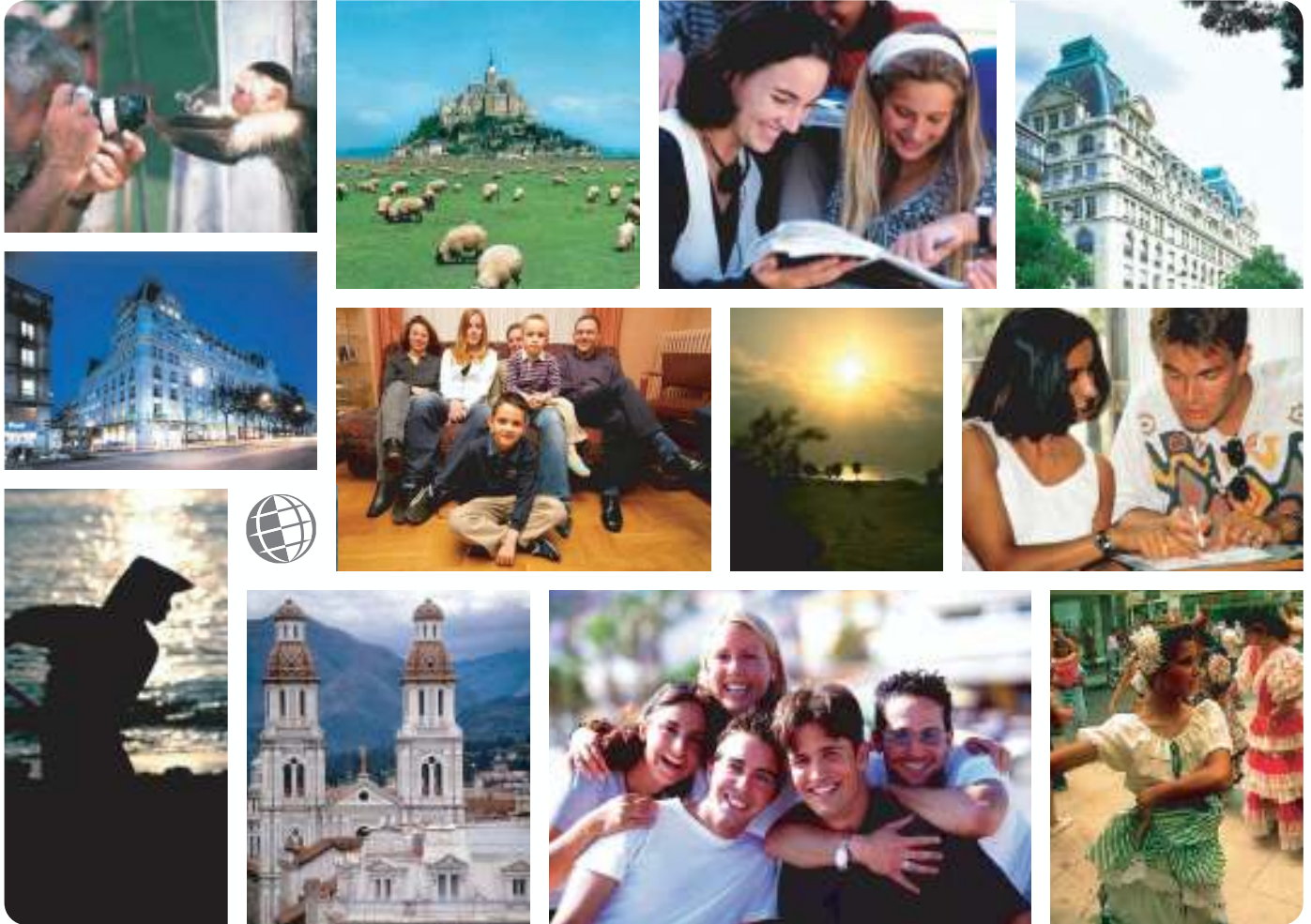


*Live the Language
Learn the Culture*

Foreign Language and Cultural Immersion Since 1968
**NATIONAL REGISTRATION CENTER
FOR STUDY ABROAD**



Spain 2008-2009

For more information please visit: www.nrca.com

NRCSA is a proud member of:




National Registration Center for Study Abroad
PO Box 1393 Milwaukee, Wisconsin 53201 USA
Tel: (414) 278-0631 Email: study@nrca.com

National Registration Center for Study Abroad (NRCSA)

P.O. Box 1393, Milwaukee, WI 53201 USA. Tel. 414 278 0631 Fax. 414 271 8884



Learn the Culture  Live the Language  Since 1968

EIS – MADRID, SPAIN

ABOUT THE SCHOOL AND THE CITY

EIS is a pioneer institution in the teaching of foreign languages in Spain. It is a family enterprise with a large, committed staff, including teachers, administration and management personnel. The four Spain schools have an international atmosphere with students from more than 20 countries studying at any one time.

The lady of Spain - **Madrid**. Spain's capital city thrives on an enchanting mixture of traditions and modernism. In this city of close to three and a half million people one can find the Palacio Real where the crown jewels, antiques and priceless tapestries of the Royal Family are kept. The world renown museum, the Prado, displays works of such great Masters as Goya, El Greco, Velazquez among others. Aside from its traditions Madrid is filled with "la movida:" - a passion for the nightlife that fills the city until dawn.

ABOUT THE PROGRAM

Classroom time is made as productive and enjoyable as possible to ensure the best results. At each school location, the director organizes the language level groups and supervises student progress.

The school has adopted their course material into four books: CICLO I, II, III, and IV that are a solid foundation for further language study through conversation, audiovisual and real life material. The school's methodology also includes use of other reference material, video, CD-ROM and the internet.

Intensive Group Program Group 22 lessons per week. The Intensive Group Program is aimed at students who wish to combine the study and learning of the language with free time for themselves. The program consists of 20 Spanish and 2 culture lessons per week in small groups. Each lesson lasts 45 minutes. 7 different levels, beginners to superior, are offered for this program with guided tours to museums (entrance fees not included), videos, and social activities are included. Culture and civilization classes are integrated into the program to enhance students' whole immersion education.

Group 5, 22 or 32 lessons per week Minimum age is 21. The Group 5 program is offered in Madrid throughout the year and can be taken for either 22 or 32 lessons per week. It is designed for professionals, executives, civil servants and anyone else who needs to learn and improve the Spanish language in as short a time period as possible. The program includes uses of the language in business situations, formal conversations and in office communications, and requires the highest participation of the student. Courses are taught with an emphasis on oral and written comprehension, presentations, cross-cultural analysis, case studies and group discussions.

DELE Exam Preparation Course 20 lessons per week, 5 to 9 students per class. The program is offered to intermediate level and above Spanish speakers who would like to attempt to pass the DELE exam for a diploma at the 'Inicial,' 'Intermedio,' or 'Superior' level.

Semester Program Group 22 lessons per week. This program is aimed at those students who would like to learn Spanish "once and for all". It follows the same structure as the Intensive Group Spanish, with the same number of lessons per week (20 lessons + 2 culture lessons), the number of students per group, etc., and is economically priced. The learning of the language, participating in everyday life, and the possibility of traveling around Spain give the student an in-depth experience of Spanish language and culture. Full-day excursions of 1 per month (entrance fees not included).

ACCOMMODATIONS

The host families are carefully selected, as are the hotels and apartments. Do not forget to specify on the registration form any d (bus), the ride being approximately 10 minutes. Laundry Included.

Student Apartments Those students who wish to take a one, two, or three month course in Alicante, may be interested in renting a room in an apartment shared with other students. The rooms are furnished with bedding provided. The bathroom and kitchen are communal. Students should bring their own towels, and are expected to pay for little expenses (gas, soap, etc.). Most of the apartments are 20 minutes away by public transportation.

Hotels & Apartments The Alicante center suggests hotels and apartments situated close to the school and with a wide range of prices. These options are on request and at additional cost.

SPECIAL ACTIVITIES

International House organizes a varied program of social activities for Spanish students. All costs of the social program are included in the course fees, except when an excursion in a coach bus.

TO REGISTER:

Complete the NRCSA Preregistration Form or contact the National Registration Center for Study Abroad at P.O. Box 1393, Milwaukee, WI 53201 USA, or by calling (414) 278-0631; by Fax (414) 271-8884.

Check out our website at <http://www.nrcsa.com>
or e-mail us at study@nrcsa.com

Programs & Activites - Madrid, Spain

Programs

Classroom time is made as productive and enjoyable as possible to ensure the best results. At each school location, the director organizes the language level groups and supervises student progress.

The school has adopted their course material into four books: CICLO I, II, III, and IV that are a solid foundation for further language study through conversation, audiovisual and real life material. The school's methodology also includes use of other reference material, video, CD-ROM and the internet.

Students enrolled for a minimum of 4 weeks may be able to earn academic credit for their Intensive Group Program study. See the [Course List and Descriptions](#) for more details.

Intensive Group Program Group 22 lessons per week. The Intensive Group Program is aimed at students who wish to combine the study and learning of the language with free time for themselves. The program consists of 20 Spanish and 2 culture lessons per week in small groups. Each lesson lasts 45 minutes. 7 different levels, beginners to superior, are offered for this program with guided tours to museums (entrance fees not included), videos, and social activities are included. Culture and civilization classes are integrated into the program to enhance students' whole immersion education.

Group 5, 22 or 32 lessons per week Minimum age is 21. The Group 5 program is offered in Madrid throughout the year and can be taken for either 22 or 32 lessons per week. It is designed for professionals, executives, civil servants and anyone else who needs to learn and improve the Spanish language in as short a time period as possible. The program includes uses of the language in business situations, formal conversations and in office communications, and requires the highest participation of the student.



Courses are taught with an emphasis on oral and written comprehension, presentations, cross-cultural analysis, case studies and group discussions. This program has Bildungsurlaub recognition in Germany.

Semester Program

Semester Program Group 22 lessons per week. This program is aimed at those students who would like to learn Spanish "once and for all". It follows the same structure as the Intensive Group Spanish, with the same number of lessons per week (20 lessons + 2 culture lessons), the number of students per group, etc., and is economically priced.

The learning of the language, participating in everyday life, and the possibility of traveling around Spain give the student an in-depth experience of Spanish language and culture. Full-day excursions of 1 per month are offered (entrance fees not included).

For those students who wish to obtain academic credit for their Semester Program study, [See the Course List and Descriptions for more details.](#)

[2005 Start Dates & Fees](#)

DELE Exam Preparation Course 20 lessons per week, 5 to 9 students per class. The program is offered to intermediate level and above Spanish speakers who would like to attempt to pass the DELE exam for a diploma at the 'Inicial,' 'Intermedio,' or 'Superior' level. The exam dates for 2005 will be announced in January 2005, but should fall on May 13 and Nov 18, 2005.

Admissions & Academic Credit

Students age 17 years and older are welcomed regardless of educational background, occupation or nationality. Students under the age of 17 must be accompanied by an adult unless enrolled in the Teen Program. No previous knowledge of Spanish is required except where otherwise indicated.

The school has official programs with a number of US and foreign universities. Students desiring credit for their study should contact their home school or request the NRCSA Credit Fact Sheet. Generally, U.S. schools consider 15 hours of study to be equal to 1 semester credit. For more information about academic credit in Spanish speaking countries, [please click here.](#) For general information on academic credit, [please click here.](#)

Programs

Intensive Group
Program
Group 5
Semester Program
DELE Exam
Preparation Course

Admissions &
Academic Credit
Certificates & Exams

Activities

Excursions, Cultural &
Social Activities

Comments

"I enjoyed getting to know people from all over the world who shared my interest in learning Spanish. I especially enjoyed my homestay, who spoke almost no English but was interested in helping me learn Spanish, as well as providing food and shelter."

School Principal,
Portland, OR

"I liked the class trips with the tour buses and guides, I learned a lot about family life from my host families. My host family was very nice and easy to deal with."

University Student,
Simi Valley, CA

"This trip was so wonderful because the people I met here are friends I will have forever and we will forever share great memories of Spain. I learned a lot about the Spanish culture and people."

University Student, Newbury,
CA

"Placing people in programs suited to their special interest is the aim of the National Registration Center for Study Abroad."

New York Times

Certificates & Exams

All students receive the EIS Certificate after successful completion of their course. Bildungsurlaub recognition is available for the Group 5, Business and the Executive Programs.

The DELE diplomas are official diplomas given by the Spanish Ministry of Education and Science which recognize the candidate as having a certain skill level in the Spanish language. DELE exams are held simultaneously in Madrid, Salamanca, Alicante, Cadiz in May & November. Preparation for the following DELE exams is offered before the exams:

1. Diploma Inicial
2. Diploma Básico
3. Diploma Superior

Price and preparation class date information can be found in Dates and Fees section.

National Registration Center for Study Abroad
P.O. Box 1393 Milwaukee, WI 53201 USA
Tel: (414) 278-0631 Fax: (414) 271-8884 E-Mail: study@nrca.com

ALL NRCSA PROGRAMS INCLUDE:

- ✓ Foreign language immersion classes
- ✓ Small interactive group and/or one-on-one instruction
- ✓ Culture program integrated into conversation classes, activities
- ✓ Meet-the-People interaction at school, homestays, & community events
- ✓ Orientation covering attractions, how to, health, safety, entertainment
- ✓ Academic assessments, placement-exit tests, Achievement Certificate
- ✓ Lodging (reduced fee if no lodging needed)
- ✓ Meals and/or cooking facilities at most centres
- ✓ Insurance: medical and accident - see below
- ✓ Emergency Hotline staffed 24 hours/day - see below
- ✓ Housing Coordinator familiar with area homestays, apartments, hotels
- ✓ Activity Coordinator facilitates transfers, cultural/social activities, tours
- ✓ Program Director experienced working with foreign participants
- ✓ Qualified, experienced, and certified educators
- ✓ Weekly proficiency goals and progress assessments
- ✓ Planning and Orientation materials
- ✓ International Ambiance, participants from around-the-world welcome
- ✓ Telecom assistance, web/e-mail access, usually on-site
- ✓ Local taxes for included services
- ✓ 24:7 Culture Immersion w/ native speakers: class, homestay, community
- ✓ **ALL NRCSA PROGRAMS INCLUDE the following INSURANCE***

ACCIDENT INSURANCE up to \$10,000 SICKNESS INSURANCE up to \$10,000

EMERGENCY MEDICAL EVACUATION up to \$25,000

EMERGENCY REUNION up to \$5,000

REPATRIATION up to \$7,500

LIFE INSURANCE \$5,000

plus

24 HOUR EMERGENCY WORLDWIDE MULTI-LINGUAL TELEPHONE ASSISTANCE

MANY ALSO OFFER

- ✓ **Tours:** cultural visits, day and weekend fieldtrips
- ✓ **Art:** classes/workshops, craft, dance, theater, fashion, music, photo
- ✓ **Humanities:** culture, area studies, hist, lit, gov't, educ, comm, plus...
- ✓ **Health:** golf, swimming, tennis, diving, skiing, riding, plus...
- ✓ **Special:** vocabulary classes tailored to your professional needs
- ✓ **Lodging:** homestay, apartment, dorm, hotel, special diet
- ✓ **Food:** home cooking, cooking classes, dine-around, wine tasting
- ✓ **Family:** services, daycare, child classes, community services
- ✓ **Teacher:** training, workshops, practicums, practice teaching, ECH
- ✓ **Teen:** camps and youth programs (including experiential)
- ✓ **University:** credit, undergraduate and graduate
- ✓ **Professional:** development credit in many fields, licensure, CEU
- ✓ **Volunteer:** medical, social service, ecology, teach plus...
- ✓ **Internships:** business, media, arts, eco, tourism, computer, plus...
- ✓ **Business:** classes, visits, networking, executive support services
- ✓ **Peer-to-Peer:** share interests, network by profession or hobby
- ✓ **Current Events & Professional Workshops, Holiday Courses**
- ✓ **Distance** educ liaison service, independent studies, research assist
- ✓ **Free** books and course materials. Return at end of studies
- ✓ **Free** airport transfers and internet access
- ✓ **Assessment** reports for attendance, progress, acculturation if needed
- ✓ **Medical:** professional training, law, social work, sciences etc.

** If you have a problem while studying abroad, call the 24 hour hotline! Call Any Time from Anywhere! Medical or travel emergencies, legal or medical or embassy referrals, lost passport or luggage, emergency message relay, coordinating emergency prescription replacement or cash transfer, emergency translations, 24-hour medical monitoring. Problems seldom occur, but when they do, it is nice to know insurance and worldwide assistance are included in your cost for study dates prepaid through NRCSA as reflected on your NRCSA confirmation. Additional optional insurance available upon request. Refer to the certificate for specific terms, conditions and other details regarding benefits, limitations, eligibility and exclusions of this plan. Questions? Contact NRCSA: Tel: 414-278-0631 ... E-Mail: info@nrcca.com ... Web: <http://www.nrcca.com>*

For Questions, Concerns, or Registration, Contact NRCSA
National Registration Center for Study Abroad * Box 1393, Milwaukee WI 53201 USA
Tel 414-278-0631 * Fax 414-271-8884* www.nrcca.com * info@nrcca.com
Since 1968 * Language-Culture Immersion Worldwide * Start Weekly * All Ages * Credit, CEU or Enrichment

PREREGISTRATION FORM – NRCSA PROGRAMS

1. Complete & send to NRCSA, P.O. Box 1393, Milwaukee, WI 53201, USA • Tel. (414) 278-0631 • Fax (414) 271-8884 • Web: www.nrca.com
2. Enclose a non-refundable deposit/registration fee of \$140 per person, per program, payable to NRCSA (\$40 registration fee & \$100 program deposit applied towards the program costs).
3. Register early. Add \$40 per person late enrollment fee if paying in full within 40 days of departure. Within 20 days, payments by certified check.
4. Credit Cards may be used for deposits (see "H" below). NRCSA street address for overnight deliveries is 207 East Buffalo Street, Suite 610, Milwaukee, WI 53202 USA. You are welcome to photocopy this form. Please send separate form for each school if taking multiple programs.

A. Name(s) _____ Sex _____ Birthdate _____ Citizenship _____
Please print
 _____ Employer _____ Occupation _____
If student, school attending and year

Street: _____ Tel. Home: _____
Street address (not P.O. Box) where someone can sign for documents sent to you.
 _____ Tel. Work: _____
 City/State/Zip: _____ Fax: _____
 _____ E-mail: _____

In Emergency, notify: _____
(Name, Address, Phone)

B. BACKGROUND: _____
Describe your background in the course you're taking abroad. Check your ability level:

- Beginner Post Beginner
 Intermediate Advanced

C. LODGING: _____
Schools will try (cannot guarantee) to meet them. Special Diet (may be available) at additional cost.

- Check Preferences.**
 Single Share Twin Other: _____
 Yes Smoking No Smoking Either
 Yes Pets No Pets Either
 Yes Children No Children Either

D. GOALS: _____

- PREFER:** Homestay Involvement Freedom to Come/Go
ARE YOU? Quiet Outgoing Frequent Traveler
OBJECTIVES: Enrichment Academic Credit Job Related
HOBBIES: Reading Music Cooking Jogging Sports

E. INSURANCE: Includes prepaid study dates. To extend coverage up to 30 days before/after study dates, add \$5/day or \$19/week and advise dates.

F. PROGRAM INFORMATION	School/Center
Program Name (use title from Dates & Fees)	City/Country
Date: Start Program	Date: Start Lodging (most start day before)
No. of hours day/week	No. of weeks attending
Disabilities/Allergies/Health Problems	2nd Choice Program
How did you learn about NRCSA?	Social Security Number
Options (see program for choices)	
Your Signature (if you are under age 18, both parents must also sign)	

INSURANCE INCLUDED for PRE-PAID STUDY DATES

ACCIDENT / MEDICAL INSURANCE UP TO \$10,000

EMERGENCY MEDICAL EVACUATION UP TO \$25,000

EMERGENCY REUNION UP TO \$5,000

REPATRIATION UP TO \$7,500

LIFE INSURANCE \$5,000

24 HOUR EMERGENCY WORLDWIDE-MULTI-LINGUAL TELEPHONE ASSISTANCE

For More Info: <http://www.nrca.com/INS24hrHotline.html>

H. CREDIT CARDS:

For program deposit only (**not final payment**) check:
 VISA Mastercard American Express Amount Charged \$ _____

_____ / _____
Card Number (13 or more numbers) Exp Date

SIGNATURE (as on card) PRINT name (as on card)

CHANGE FEES of at least \$35 apply for each change you make. Some "changes" may result in cancellation fees.

CANCELLATIONS are effective the day received in writing by NRCSA in Milwaukee. All payments less \$140 per program fully refundable up to 60 days prior to departure. For cancellations within 60 days of departure, \$250 per person is not refundable; within 40 days of departure, less 50% of program cost or \$300 per person (whichever is greater); within 14 days of departure, 100% of program cost is non refundable. Airline cancellation penalties, if any, are in addition to those outlined above. Cancellation penalties are per person, per program. Medical, baggage (above that included) and cancellation insurance is strongly recommended. Attach a note if you have a medical condition or Rx which the school/center should know about.

CONDITIONS: Each institution listed herein is independent of the National Registration Center for Study Abroad (hereinafter referred to as NRCSA, controls, and will periodically make changes in the program. Classes may fill, be changed, or dropped by the sponsoring academic institutions. NRCSA is a division of Mibar Ltd. and is not responsible for these changes or other actions beyond its control such as strikes, postal delays or loss, mechanical breakdowns, weather, government actions, delay or acts/omissions of suppliers. NRCSA may make changes or substitutions or cancel any program. In the event of entire program cancellation by NRCSA, liability is limited to refunding all monies paid to NRCSA for said program. Passengers electing not to use portions of a program shall not be entitled to a refund. No agent or representative of NRCSA shall have the right to alter the provisions listed herein. Costs based on tariffs and exchange rates effective the date of printing of this material, and are subject to change. Additional costs resulting from such change will be paid by the participant. Registrations are valid when accepted by NRCSA in Milwaukee. The passage contract used by the airline, when issued, is the sole agreement between it and you. Photographs of or statements by participants may be used by NRCSA. NRCSA, group leaders or foreign coordinators, at their discretion, may get medical assistance for participants, or place them in a hospital, or fly them back to the U.S. for medical treatment. All costs related to medical treatment or evacuation will be paid by the participant. As visitors you are expected to adhere to foreign rules and customs. If the foreign staff feels you are not adhering to these rules and customs, your participation in the program shall terminate immediately without refund whatsoever. A "homestay" is defined as living with a local person(s) in the foreign country and may not be multi generational, multinational, etc. It is the responsibility of the participant to have required proof of citizenship and visa(s) if applicable - check with the consulate of the country(s) you will be visiting.

INFORMATION USE: Information provided to NRCSA will be shared with participating organizations to facilitate your registration.

NOTE: Classes canceled in honor of local holidays are not made up. Foreign Language schools use placement tests. If there is no group at your level, smaller group or tutor classes may be substituted with fewer hours per week. Classes are conducted entirely in the target language. See **Fast Facts Guide** for more information.